

A model for personality at three levels

William Revelle**, David M. Condon**

Northwestern University, Evanston, IL

Abstract

People differ. How and why they differ are the fundamental questions for personality psychologists. In this article we address three levels at which people differ: within individuals, between individuals, and between groups of individuals. A dynamic model of personality where traits are seen as rates of change in states in response to environmental cues is considered. Within individuals, motivational and behavioral states show inertial properties and lead to an analysis of rates of change and latencies of behavior. Between individuals, the analysis is one of frequency and duration of choices. When individuals self select into groups reflecting shared interests and abilities, the structure of these group differences reflects the consequences of the self selection. Examples of the dynamic model are given for each level of analysis.

Keywords: personality traits, dynamics of action, reinforcement sensitivity theory, multi level model, affect, behavior, cognition, desire, motivation, goals

*Correspondence concerning this article should be addressed to William Revelle, Department of Psychology, Northwestern University, Evanston IL, 60208. Telephone number: 847-491-7700. Email: revelle@northwestern.edu.

Preparation of this manuscript was funded in part by grant SMA-1419324 from the National Science Foundation to WR.

This is a draft version as submitted to JRP. Please do not cite without permission.

A model for personality at three levels

William Revelle**, David M. Condon**

Northwestern University, Evanston, IL

1. Levels of individual differences

People differ. How and why they differ are the fundamental questions for personality psychologists. In this article we address three levels at which people differ: within individuals, between individuals, and between groups of individuals. Although the structure of differences at each level do not necessarily relate to the structure of differences at other levels, analysis of the temporal dynamics of differences suggests some hope for a unified model. The study of temporal dynamics in personality is not new (e.g., [Atkinson and Birch, 1970](#), [Carver, 1979](#), [Carver and Scheier, 1982](#), [Kuhl and Blankenship, 1979](#), [Revelle and Michaels, 1976](#), [Revelle, 1986](#)) but, with few exceptions ([Carver, 1979](#), [Carver and Scheier, 1982](#), [Read et al., 2010](#)), has not had much impact upon personality theory. This is unfortunate, for the study of dynamics integrates aspects of choice, persistence, latency, frequency and time spent into a common framework. By understanding temporal dynamics within people, we are able to explain patterns of choice between people and, by examining the cumulative effect of these choices in terms of time spent, to understand the ways in which individuals tend to organize into groups according to personality traits.

Personality is an abstraction used to describe and explain the coherent patterning over time and space of affects, cognitions, desires and the resulting behaviors that an individual experiences and expresses. People differ from themselves on a moment to moment basis in that they do not think, feel or act the same all the time. They change in their feelings, in their thoughts, in their desires and in their actions. To not change in response

to a situation is maladaptive. When others evaluate our reputation, they are evaluating our behavior in critical situations and how it changes across situations. When we think of our identity, we interpret our behavior as the result of our affects and our cognitions.

A primary level of analysis of personality examines the patterning of ways in which people change. To observers, the dynamic stream of feelings, thoughts, motives and behavior show a unique temporal signature for each individual. To an individual differences theorist, the issues of how and why individuals differ in their patterns are central to the domain of study ([Costa and McCrae, 1992a](#), [Eysenck and Himmelweit, 1947](#), [Eysenck, 1981](#), [Digman, 1990, 1997](#), [Goldberg, 1990](#), [Hogan, 1982](#), [Hogan and Kaiser, 2005](#)). To a biologically minded psychologist, these dynamic processes reflect genetic bases of biological sensitivities to the reinforcement contingencies of the environment ([Corr, 2008a](#), [Corr et al., 2013](#), [DeYoung et al., 2010](#), [Smillie, 2008](#), [Smillie et al., 2012, 2013](#)). To a mathematically oriented psychologist, these dynamic processes may be modeled in terms of the differential equations of the Dynamics of Action ([Atkinson and Birch, 1970](#), [Atkinson and Raynor, 1974](#), [Revelle, 1986](#)).

By examining patterns of change, it is possible to organize the study of personality at a second level – the analysis of differences between individuals in the coherent patterning over time and space within individuals. It is at this level that conventional trait theorists describe how people differ from each other in the frequency distribution of their actions ([Fleeson, 2004, 2007a](#)). Differences in sensitivity to the rewarding or punishing aspects of the environment are discussed at this level in terms such as reinforcement sensitivity ([Corr, 2008a](#), [Corr et al., 2013](#), [Gray and McNaughton, 2000](#), [Smillie, 2008](#), [Smillie et al., 2011](#)). We model differences at this level in terms of the rates of change in response to situational inputs and how these differences in rates of change result in differences in frequency and duration of various feelings, thoughts, and actions.

**Correspondence concerning this article should be addressed to William Revelle, Department of Psychology, Northwestern University, Evanston IL, 60208. Telephone number: 847-491-7700. Email: revelle@northwestern.edu.

Preparation of this manuscript was funded in part by grant SMA-1419324 from the National Science Foundation to WR.

This is a draft version as submitted to JRP. Please do not cite without permission.

People also differ from each other in terms of important life choices; examples include choice of college major and career. As we will show, these choices reflect a dynamic interplay of abilities, interests, and temperament in response to the long term patterns of reinforcements achieved by each individual. These patterns of reinforcement, in combination with original differences in sensitivities to environmental cues can result in group differences that are structured in a completely different manner than the structure of personality normally seen at the between individual level.

1.1. Different levels can be different

Before elaborating on the three levels introduced above, it is important to acknowledge that each of the levels differ dramatically in both content and structure. Although it is well known that the structure within one level does not imply anything about the structure at a different level, this distinction is frequently forgotten. Indeed, [Cattell \(1943, 1946\)](#) (see [Revelle, 2009](#)) went so far as to suggest that the dimensions within individuals should be the same as those between individuals. That analyses at different levels should not be confused has been labeled the Yule-Simpson paradox ([Armistead, 2014](#), [Kievit et al., 2013](#), [Pearl, 2014](#), [Simpson, 1951](#), [Yule, 1903](#)), the fallacy of ecological correlations ([Robinson, 1950](#)) and the within group-between group problem ([Pedhazur, 1997](#)). Indeed, to confuse the dynamics within individuals with the averages between individuals is to mistakenly assume ergodicity ([Molenaar, 2004](#)).

In a multilevel structure, observed correlations across individuals may be decomposed into within individual correlations and between individual correlations. Similarly, the correlations between individuals when individuals are members of different groups reflects this within and between group correlational structure:

- $r_{xy} = eta_{x_{wg}} * eta_{y_{wg}} * r_{xy_{wg}} + eta_{x_{bg}} * eta_{y_{bg}} * r_{xy_{bg}}$
- $r_{xy_{wg}}$ is the within group correlation
- $r_{xy_{bg}}$ is the between group correlation
- $eta_{x_{wg}}$ is correlation of the data with the within group values
- $eta_{x_{bg}}$ is correlation of the data with the between group values

This distinction will be important as we consider models of coherency and differences within-individuals, between-individuals, and between groups of individuals.

2. Dynamics within individuals

Two basic concepts of individual dynamics are that (1) time is a variable, and (2) that motivations and actions have *inertial* properties. Inspired by the work of [Lewin et al. \(1935\)](#), [Zeigarnik \(1967\)](#), [Feather \(1961\)](#), and [Atkinson and Cartwright \(1964\)](#), [Atkinson and Birch \(1970\)](#) proposed that a wish persists until satisfied and a wish does not increase unless instigated. (This is, of course, analogous to Newton's 1st law of motion that a body at rest will remain at rest, a body in motion will remain in motion.) By considering motivations and actions to have inertial properties, it became possible to model the onset, duration, and offset of activities in terms of a simple set of differential equations.

Unfortunately, the theory of the Dynamics of Action (DOA, [Atkinson and Birch, 1970](#)) was a theory before its time. Few psychologists of the 1970s were prepared to understand differential equations or develop computer models of difference equations. However, with a simple reparameterization ([Revelle, 1986](#)) and modern software and computational power, the model is much easier to simulate and examine. This article describes that reparameterization (the Cues-Tendency-Action or **cta** model) of the original theory and explores the power of including temporal dynamics in a theory of personality at three levels of analysis.

Recent discussions of the **cta** model include [Revelle \(2012\)](#), which applied the model to the dynamics of emotion (e.g., [Frijda, 2011](#)), and [Fua et al. \(2010\)](#), who analyzed social behavior in terms of the **cta** model. To allow the reader to explore the applications of this model, computer code simulating the revised model is written in the open source language R, ([R Core Team, 2014](#)) and is included as the `cta` function in the *psych* package ([Revelle, 2014](#)) which is available for download from the Comprehensive R Archive Network (CRAN) at <http://cran.r-project.org>.

2.1. The original dynamics of action

The dynamics of action was a model of how *instigating forces* elicited *action tendencies* which in turn elicited *actions* ([Atkinson and Birch, 1970](#)). The basic concept was that action tendencies had *inertia*. That is, a wish (action tendency) would persist until satisfied and would not change without an instigating force. The consummatory strength of doing an action was thought in turn to reduce the action tendency. Forces could either be instigating or inhibitory (leading to *negaction*).

The relationship between instigating forces, changes in action tendencies over time, and actions was described by a simple differential equation (reminiscent of

Table 1: The basic elements of the dynamics of action. Adapted from [Atkinson and Birch \(1970\)](#)

Approach		Avoidance	
Instigating Forces	F	Inhibitory Forces	I
Action Tendencies	T	Negaction Tendency	N
Consummatory Value	c	Resistance Value	r
Consummatory Forces	C	Force of Resistance	R

Newton’s second law)

$$dT = F - C \quad (1)$$

where

$$C = cT \quad (2)$$

and $c = 0$ if an action is not being done, otherwise c is a function of the type of action (eating peanuts has a smaller c than eating chocolate cake).

That is, for a set of action tendencies, $T_i \dots T_n$, with instigating forces, $F_i \dots F_n$,

$$\begin{cases} dT_i = F_i - c_i T_i & \text{if } T_i \text{ is ongoing} \\ dT_i = F_i & \text{if } T_i \text{ is not ongoing} \end{cases} \quad (3)$$

It is clear from equation 3 that an unexpressed but instigated action tendency will grow linearly, but once initiated will achieve an asymptotic value when the rate of growth is zero. This occurs when $F_i = c_i T_i$ and thus

$$T_{i\infty} = F_i / c_i \quad (4)$$

The strength of a single action tendency – say, the tendency to eat a pizza – will increase when instigated by the smell of the pizza but will then (begin to) diminish once the first bite of pizza is consumed. A steady state will be achieved as the effect of the instigating force is balanced out by the successful consummation. These differential equations can be simulated as difference equations with graphical output for the strength of the action tendencies (see Figure 1).

Similar to action tendencies are *negaction tendencies* – tendencies to not want to do something. These grow in response to *inhibitory forces*, I , and are diminished by the force of *resistance*, R , which is, in turn, a function of the cost of resistance, r , and the strength of the negaction, N .

$$dN = I - R = I - rN. \quad (5)$$

In contrast to Equation 3, where action tendencies are reduced only if the action is happening, Equation 5 suggests that negaction always achieves an asymptote, even

if the action is not occurring. This is because effort is required to not do a task, that is to resist doing a task, thus the force of resistance is always present and negaction will achieve an asymptotic level of

$$N_\infty = I/r \quad (6)$$

The resultant action tendencies are the difference between Action and Negaction $T_r = T - N$. [Atkinson and Birch \(1970\)](#) assumed that action choice between competing action tendencies simply followed the maximum action tendency.

Although a general theory of action, the dynamics of action was typically considered in an achievement setting. Based upon the theory of achievement motivation ([Atkinson, 1957](#), [Atkinson and Raynor, 1974](#)), the instigating force was thought to be a quadratic function of the subjective expectation of success (p_s), the value of that success which varied according to task difficulty ($1 - p_s$), and the need for achievement (N_{ach}):

$$F = (p_s)(1 - p_s)N_{ach}. \quad (7)$$

But an achievement setting is also an opportunity for failure and the change in negaction induced by the task was a function of the inhibitory forces which were in turn a quadratic function of the likelihood of failing, and the pain experienced in failing, and the need to avoid failure (N_{af}). The likelihood of failure is of course just task difficulty, and the pain of failing is greater the easier the task. Thus:

$$I = (1 - p_s)(p_s)N_{af} \quad (8)$$

Early suggestions for inertial properties of motivations were found in the studies by [Zeigarnik \(1967\)](#) as well as by [Feather \(1961\)](#). An application of the inertial properties of motivation in an achievement setting was found in an analysis of the effect of task difficulty on performance as a function of the number of repeated trials ([Revelle and Michaels, 1976](#)). This application demonstrated how two seemingly contradictory models ([Atkinson, 1957](#), [Locke, 1968](#)) could be reconciled with the addition of inertial properties. Assuming that success quenches action tendencies but that failure does not, resultant motivation should grow over successive failures. As task difficulty increases, the likelihood of failure increases and thus there should be more carry-over and growth of motivation as tasks become harder. The effect of carryover may be expressed in colloquial terms as “If at first you don’t succeed, try, try again”.

By separating action tendencies from negaction tendencies, the dynamic theory had the advantage over earlier work that the measurement of approach and avoidance motivation did not have to be on the same ratio

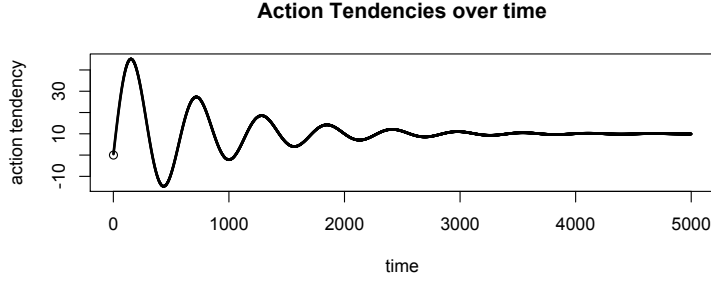


Figure 1: A single action tendency will achieve an asymptotic value of the ratio of instigating force to consummatory value as corresponding action is expressed and leads to consummation.

scale of measurement (Kuhl and Blankenship, 1979). That is, what determined the growth of action tendencies could be measured on a different scale from what determined negaction. This was a marked improvement over prior work (Atkinson, 1957) suggesting that resultant action tendencies were a function of the difference between achievement strivings and fear of failure as well as any extrinsic needs (T_{extr}) to do the task:

$$T_r = T_{ach} - T_{af} + T_{extr} = (N_{ach} - N_{af})p_s(1 - p_s) + T_{extr}. \quad (9)$$

Unfortunately, although easy to specify, the DOA model needed a number of extra parameters to work: it was necessary to include a decision mechanism that would automatically express the greatest action tendency in action. Complicating this addition, the rule of always doing the action with the greatest action tendency led to “chatter” in that an action would start and then immediately stop as the action it had supplanted had a rapidly growing action tendency. To avoid this problem it was necessary to introduce instigating and consummatory *lags*, where switching to a new activity would not immediately lead to complete consummation of that need (eating the first bite of a piece of pizza does not immediately satisfy the desire to consume pizza).

Although successful computer simulations of the model were implemented, few researchers were interested in testing the implications of computer simulations with studies of human behavior. An important exception was Blankenship (1987) who directly tested the implications for a study of achievement. A modification of the DOA model which maintained specification of the dynamic properties of behavior has been developed by Sorrentino (1993) and his colleagues (Sorrentino et al., 2003) who have applied it to a variety of social contexts.

2.2. A simple reparameterization: the CTA model

To avoid the problems of instigating and consummatory lags and the need for a decision mechanism, it is possible to reparameterize the original model in terms of action tendencies and actions (Revelle, 1986). Rather than specifying inertia for action tendencies and a choice rule of always expressing the dominant action tendency, it is possible to think of actions themselves as having inertial properties. In an environment which affords cues for action (**c**), cues enhance action tendencies (**t**) which in turn strengthen actions (**a**). This leads to two differential equations, one describing the growth and decay of action tendencies (**t**), the other of the actions themselves (**a**).

$$dt = Sc - Ca \quad (10)$$

$$da = Et - Ia \quad (11)$$

c, **t** and **a** are vectors (perhaps of different dimensionality), one of which (**c**) is a function of the environment, and two of which (**t** and **a**) change dynamically. The parameters **S**, **C**, **E**, and **I** are matrices representing the connection strengths between cues and action tendencies (**S**), action tendencies and actions (**E**), the consummatory strength of actions upon action tendencies (**C**), and the inhibition of one action over another (**I**). They are specified as initial inputs but could themselves change with learning and reinforcement (Corr, 2008b, Revelle, 2008). That is, while successfully completing an action reduces the immediate tendency to do the action, the connection strengths between the cue and the tendency, and the tendency and the action are presumably increased. The model, although expressed in equations 10 and 11 may also be represented as box diagram of the flow of control (Figure 2). Not shown in Figure 2, but implied by the use of matrices for **S**, **E**, **C** and

I are the connections between cues and different action tendencies, and between action tendencies and different actions. Thus, cue_1 can excite $tendency_2$, and $action_3$ can reduce the desire for another action $tendency_1$.

Table 2: The basic elements of the **cta** model. The environmental input to the system (the cues) are variable as the individual interacts with the world. The strength of these cues upon action tendencies is moderated by the connection strengths in the stimulation matrix. The resulting tendencies have inertial properties (increasing when stimulated, decreasing when consummated.) The action tendencies induce actions through the excitation connections. Actions also have inertial tendencies but are reduced by other actions as well doing the action (self inhibition). The connections of the matrices may change over time to reflect learning in a long term response to the reinforcement of actions.

Dynamic Vectors		Stable matrices	
Cues	c	Stimulation strength	S
Action Tendencies	t	Excitation	E
Actions	a	Consummation	C
		Inhibition	I

If just a single action tendency and the resulting action are cued, the result is an action tendency and resulting action similar to that predicted by the dynamics of action and shown in Figure 1. Actions that are not mutually inhibitory both rise and fall independently of each other (Figure 3 upper panel). Cue strength (**c**) is reflected in the initial growth rate of action tendencies and of actions as well as the asymptotic level. The consummation parameter, **C**, affects the asymptotic level as well as the frequency and speed of dampening of the action tendencies and thus of the actions. The self inhibition parameter, **I**, affects the asymptotic level of action tendencies as well as the dampening of the actions themselves and indirectly, of the action tendencies (Figure 3 lower panel).

The model becomes much more interesting when we consider the case of mutually incompatible (mutually inhibitory) actions. If a person can do only one of a set of actions at a time, then, although the tendencies or desires to do the actions run off in parallel, the actual expression of action runs off serially (Figure 4). A memorable example of incompatible responses is found in the newt, which copulates under water, but breathes at the surface. By increasing the oxygen content of the atmosphere, the length of each copulatory bout is prolonged (Halliday, 1980, Halliday and Houston, 1991). Not quite as dramatic is the said inability of Gerald Ford to walk and chew gum at the same time. Similar incompatibilities involving the allocation of attention is the detrimental effect of talking on a phone while driv-

ing, or checking email while working on a manuscript.

The power of a dynamic model is that it predicts change of behavior even in a constant environment where the instigating cues are not changing. With mutually incompatible actions, action tendencies can all be instigated by the environment but only one action will occur at a time. Action tendencies resulting in actions will then be reduced while other action tendencies rise. This leads to a sequence of actions occurring in series, even though the action tendencies are in parallel.

Although somewhat similar in structure to the cybernetic control theory models of Carver and Scheier (1982), the models differ in that there is no set point or comparison level in the **cta** model. For, as Bolles (1980) has shown, stable rates of eating behavior and subsequent body weight can result as a balance between the taste of the food and the effort needed to be expended to get the food, with no need for positing a set point for adiposity.

2.3. Exploring within subject dynamics

When originally proposed, the Dynamics of Action was hard to study except by computer simulation and by arguments based upon aggregated behavior. But, with the introduction of daily diaries (Green et al., 2006), but more importantly, telemetric methods (Wilt et al., 2011a) and better computational methods (Bates et al., 2014, Pinheiro and Bates, 2000), it is now possible to study within subject variation in affect, behavior, and cognition (Fleeson et al., 2002, Fleeson, 2007b, Rafaeli et al., 2007, Wilt et al., 2011b). When the structure of affect is examined within individuals, the results are strikingly different from that found between individuals. The well known two dimensional structure between individuals of Energetic Arousal and Tense Arousal (Schimmack and Reisenzein, 2002, Thayer, 1989, 2000) or of Positive and Negative Affect (Watson and Tellegen, 1985, 1999) (see also Rafaeli and Revelle, 2006) shows reliable individual differences in structure within individuals (Rafaeli et al., 2007).

Rafaeli et al. (2007) found that the correlation over time between positive and negative affect (and between tense and energetic arousal within subjects) showed reliable individual differences in affective synchrony. In other words, individuals were reliably synchronous (showed positive correlations), asynchronous (no correlation) or de-synchronous (negative correlations). Further, “[n]euroticism, extraversion, sociability, and impulsivity – major personality dimensions often associated with affective experience – were not associated with synchrony” (Rafaeli et al., 2007, p 921). In

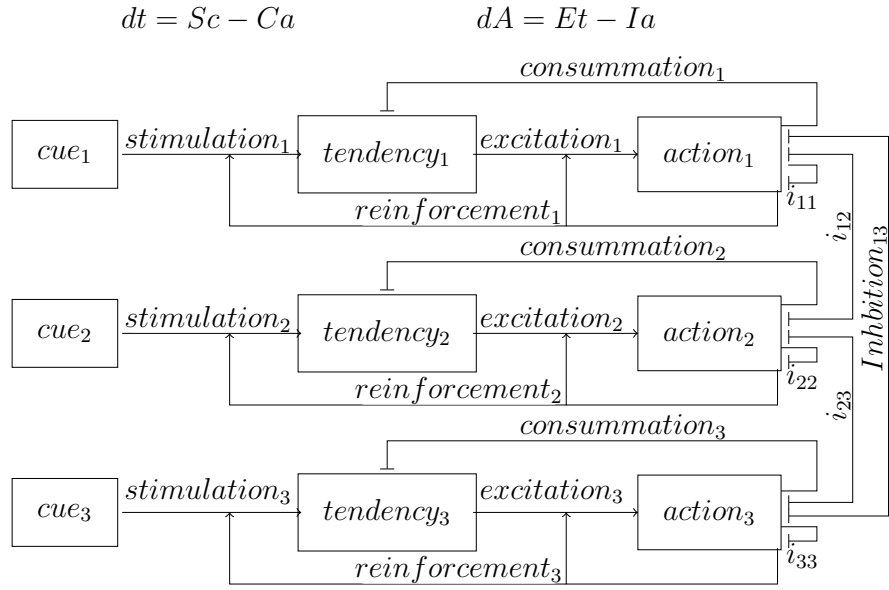


Figure 2: A simplified model of the cues, tendency, action (**cta**) model. Cues stimulate action tendencies which in turn excite actions. Actions may be mutually inhibitory and also reduce action tendencies. Extensions of this model allow for learning by changing the stimulation, excitation, and inhibition weights. These longer term learning paths are shown as reinforcement paths and reflect the reinforcing effects of successful actions upon the **S** and **E** matrices. Mutually compatible activities do not inhibit each other, and thus have inhibition strength of 0. The inhibition effect of an action upon itself reflects the cost of doing the action. Not shown in the figure, but implied by the use of matrices, are cross connections between $cues_i$ and $tendencies_{i \neq j}$ and similar cross connections between tendencies and actions, and consummations of actions on different tendencies.

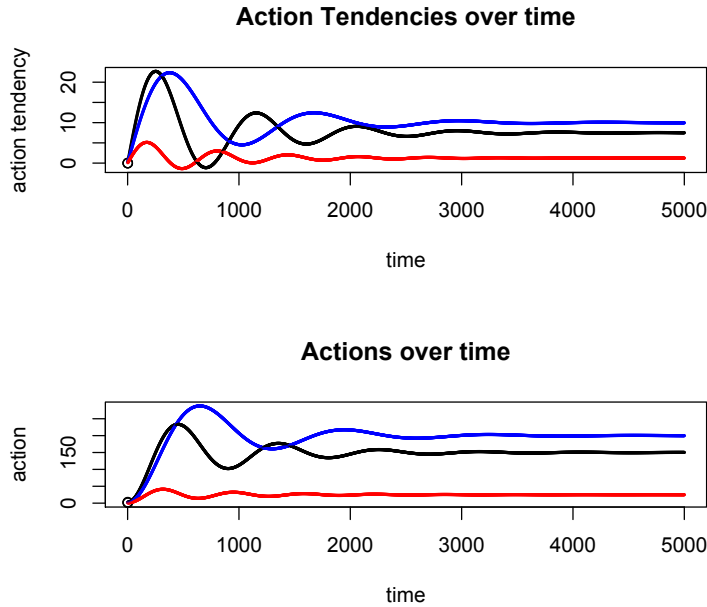


Figure 3: Three action tendencies representing three compatible actions. Because all three actions are mutually compatible, they each achieve their asymptotic value.

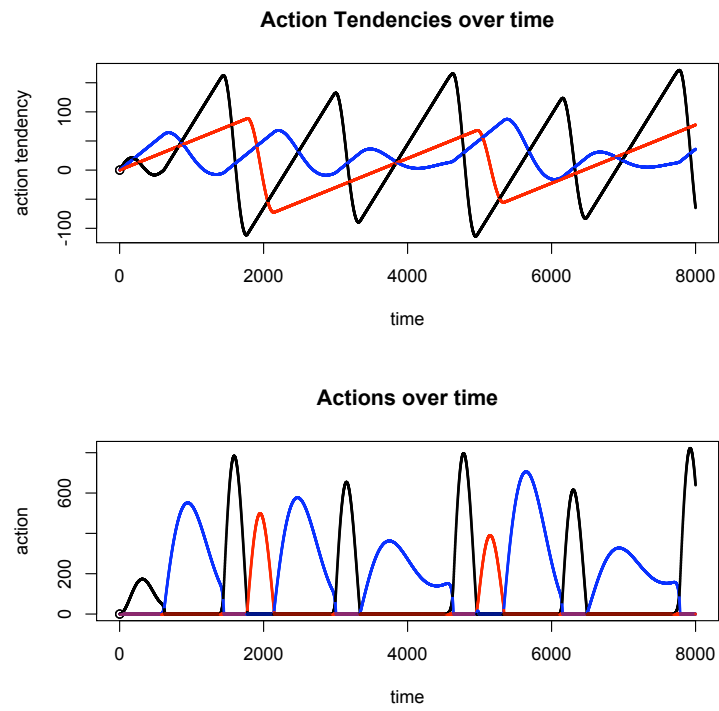


Figure 4: Three mutually incompatible activities inhibit each other and thus their respective action tendencies rise and fall over time. The flow of action tendencies run off in parallel, but because of inhibition, the actions occur sequentially.

a subsequent study examining the cognitive interpretation of situations, although the between individual correlation of energetic and tense arousal was the prototypical null, the correlation between energetic and tense arousal within subjects was a reliable individual difference that reflected the level of challenge vs. threat perceived by the subjects (Wilt et al., 2011b).

What occurs within individuals is the complex interplay of affects, behaviors, cognitions and desires rising and falling over time and we observe the correlations of levels of these measures within individuals over time. Within individuals, the basic parameters are rates of change: how rapidly do action tendencies grow, how rapidly do they decay, and how do some actions inhibit others? The speed of growth in action tendencies presumably reflects differential sensitivities to the environmental contingencies of reward and punishment while the speed at which action tendencies decay reflects differential rates of habituation/adaptation/consummation. That is, what is stable within an individual is the rate at which he or she adapts to the environment. Stable traits are the derivatives of states.

Most importantly, the predictions of the *cta* or DOA models is that motivation carries over from trial to trial, and that effort will increase following failure but be quenched by success. This observation is one of the more compelling predictions of the *cta*/DOA models. Contrary to simple reinforcement theories, the immediate effect of success is to reduce effort on the subsequent trial, while the immediate effect of failure is to increase effort on the subsequent trial (Revelle and Michaels, 1976). This is clearly an adaptive response, because success signals that less effort is required, but failure signals that more effort is required. A somewhat similar prediction follows from the model of passive goal guidance (PGG) which considers the unconscious effect on goal seeking behavior of prior outcomes (Laran and Janiszewski, 2009). The longer term effect of reinforcement is to modify the **S**, **E**, **C**, and **I** matrices to reflect the pattern of successes and failures.

3. Between Individual differences

Dynamic models can be applied to differences between individuals, not to predict trial to trial dynamics, but rather to model relative rates of growth and decay. Between individuals, we notice differences in time spent doing various activities. We do not observe growth rates, but we do observe frequencies, latencies, and persistence. Perhaps most notably, we learn to recognize the patterning of behaviors, feelings, thoughts, and desires within ourselves and others.

Whether one focuses on the behavioral dimensions of approach, avoidance, and inhibition (Gray and McNaughton, 2000, Corr, 2008a, Smillie, 2014, Eysenck, 1990), the five/six dimensions reflecting individual differences in self description examined by Ashton et al. (2007), Digman (1990), Goldberg (1990), McCrae and Costa (1997) and numerous others, one is taking average levels of affects, behaviors, cognitions, and desires (Hilgard, 1980, Ortony et al., 2005, Scherer, 1995, Wilt and Revelle, 2009).

These average levels of what one tends to do may be distinguished from maximum levels of what one can do. That is to say, from ability. We have known since Spearman (1904) that it is almost impossible to find a cognitive task that does not correlate with other cognitive tasks. The dominant models in cognitive abilities research (Carroll, 1993, Horn and Cattell, 1966, Johnson and Bouchard, 2005, McGrew, 2009) both support the notion of general cognitive ability (“g”) though the manner in which they organize the abilities below this highest level varies considerably. But ability is not just a high score on an ability test, it is succeeding on many daily tasks and even leads to survival, for life is an intelligence test with many subtests (Gottfredson, 1997). Not only does ability relate to the risk of mortality throughout one’s life (Deary, 2008) it is stable: ability measured at age 11 correlates .67 with ability measured 79 years later (Deary et al., 2013).

If temperament is what you usually do, and ability is what you can do, interests are what you like to do. Just as the dimensions of temperament may be analyzed through factor analysis, so can the dimensions of interest. At a very high level, interests can be grouped into the dimensions of people vs. things and of facts versus ideas (Prediger and Vansickle, 1992). These high level dimensions themselves can be decomposed into the lower level facets of specific interests known as the RIASEC (Holland, 1959, 1996).

3.1. Categorization of Differences as Temperaments, Abilities, and Interests

Until the mid-1950s, it was the tradition in personality research to integrate ability, temperament, and interests (Cattell, 1946, Eysenck and Himmelweit, 1947, Kelly and Fiske, 1950). While this has continued among many European psychologists, there has been a tendency among American personality psychologists to focus on dimensions of temperament at the exclusion of ability or interests. Thus, there has been an emphasis upon the Giant 3/Big 5/Big 6 dimensions of temperament without considering how these relate to dimensions of ability or interests. Exceptions to this general

rule include Ackerman (1997), Ackerman and Heggestad (1997), Deary et al. (2004), Deary (2008), Deary et al. (2013), Ferriman et al. (2009), Gottfredson (1997), Lubinski and Benbow (2000), Lubinski et al. (2001), von Stumm et al. (2011) and they are notable for their rarity. We follow the example of Ackerman (1997) and von Stumm et al. (2011) by preferring to focus on the integration of these three domains, as this approach is consistent with the theoretical work of Plato (Hilgard, 1980, Scherer, 1995) and early personality scholars (Cattell, 1946, McDougall, 1923). These domains may be denoted by the labels Temperament, Abilities and Interests (Revelle et al., 2011).

The temperament domain encompasses those individual differences which are typically researched by modern personality psychologists. While the Big Five model enjoys wide acceptance as a relatively inclusive descriptive framework for the temperamental differences, several alternative models have been proposed as well. To a substantial extent, these alternative models merely reflect higher or lower level descriptions of the same multi-dimensional universe of individual differences. For example, the tendency to rely upon five-factor structures does not preclude the possibility of organizing the same individual differences with more (DeYoung et al., 2007, Ashton et al., 2007, Costa and McCrae, 1992b) or fewer dimensions (DeYoung, 2010, Saucier, 2009, Digman, 1997). No matter how many dimensions are deemed most appropriate for a given context, it is generally the case that these individual differences can also be evaluated according to the degree to which they describe an individual's stable tendencies in terms of affect, cognition, desire, and behavior (Wilt and Revelle, 2009).

The ability domain, which is perhaps the oldest line of research among modern personality psychologists, encompasses individual differences in cognitive abilities ranging from executive functioning and attention to more traditional measures of intelligence. Unlike the temperamental differences, cognitive abilities are typically measured with "maximal performance" tasks that incorporate items or tests that span a range of difficulties. It should also be noted that individual differences in cognitive ability are not only a function of the narrowly defined abilities which relate to specific tasks (e.g., spatial navigation or verbal reasoning) but also differential contributions between crystallized and fluid ability.

Research on conative individual differences (i.e., differences in desires, motivations, volition and striving) is most frequently conducted through the assessment of interests, especially vocational interests. The dominant interests framework, known as the RIASEC model

of vocational interests (Holland, 1959, 1996), organizes both interests and jobs according to six categories (and related scales) – Realistic, Investigative, Artistic, Social, Enterprising, and Conventional. The framework itself allows for hierarchical organization of specific occupations which can be grouped according to shared basic interest categories and these in turn can be grouped at a higher level of six general interest factors (Armstrong et al., 2004). In other words, the basic interests may be seen as equivalent to the facet level of the Big Five in the temperament domain. It has also been suggested that the six factor structure can be further simplified to two dimensions which are known as data/ideas and people/things (Armstrong et al., 2008, Prediger and Vansickle, 1992).

It should be noted that the assessment of vocational interests as a proxy for conation is practical but inadequate. It does not typically include the assessment of preferences, values, avocational interests or pastimes. More generally, the assessment of conative differences is hampered by the fact that specific activities are often idiosyncratically rooted in previous experience and are generally pursued sequentially, with varying degrees of intensity, in accordance with circumstantial factors. In other words, the use of interests to capture conative differences is problematic because (1) interest in a behavior or activity is often dependent on knowledge about that activity and (2) interest does not reflect the intensity with which an activity is pursued, the enjoyment derived from it, or the circumstantial factors which may impede or demand the pursuit of any given activity (e.g., socioeconomic status, cultural influences, etc.). Related to these issues is the fact that the various aspects of conation are seemingly quite distinct: the assessment of interests provides a means of describing one's preferences; motivation is generally framed as a measure of intensity (Carver and White, 1994, Gray and McNaughton, 2000), goals and values are often framed as trait-like heuristics that individuals use to navigate through the stream of choices in life (Lieberman et al., 2001, Molden and Higgins, 2005, Peterson and Seligman, 2004). In essence, it seems that the conative domain is perhaps more sensitive than the temperament and ability domains to variability in the nature of action tendencies at the within individual level.

3.2. Modeling social behavior at two levels: cta and TAI

The expression of social behavior at the between-individual TAI level is typically construed as an example of extraversion. Social interaction can also be modeled using the cta model. If, for example, a group of four

individuals gather together, each individual in the group will have a desire (action tendency) which reflects their interest in talking. When one person in the group is talking, the others are generally inhibited. At the individual level, differences in the desire to talk (and the willingness to remain inhibited from talking) are a function of temperamental differences, but these might also be viewed as within individual sensitivities (growth rates) to cues for talking. When one person in the group is talking, the extent to which others are inhibited will reflect their sensitivity to other cues (e.g., the desire to listen, understand, not interrupt, etc.) Desires to talk run off in parallel, but behaviors are sequential. Differences in growth rates result in differences in latency and persistence. Figure 5 demonstrates how such an interaction might unfold by plotting the action tendencies for talking for four individuals over 5,000 arbitrary units of time. Note that, in this example, one person talks frequently while another is much less involved; these two might be viewed as extraverted and introverted, respectively.

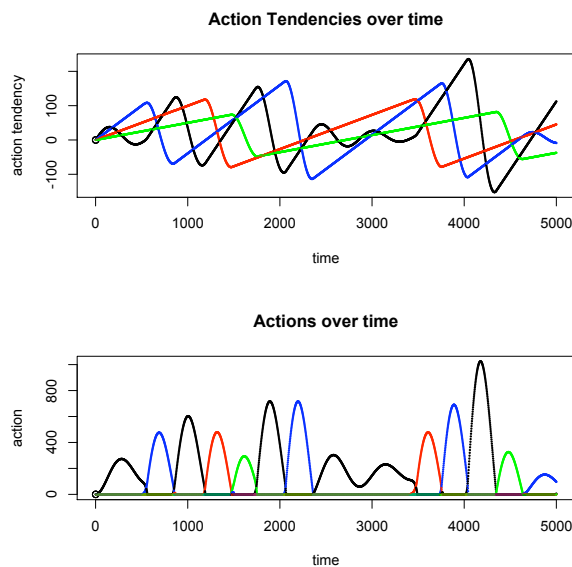


Figure 5: Simulation of 4 individuals differing in their excitation of a tendency

An important point from this simulation is the recognition that both the DOA and **cta** models involve temporal measures (latency and persistence) which are functions of the choices available. Contexts differ in the sets of alternative activities. We simulated talking versus listening (not talking), but one could also think of each

situation as offering a range of alternatives. Consider the context of a “lively party”. To some, this is an opportunity to talk to many different people, to others the chance to talk to a few special friends, to others the opportunity to put a lamp shade on their head. The choices made, and the latency and persistence of the various action tendencies, are all functions of cue strength for those activities, and inhibitory effects from other activities.

That the situation is not just the physical environment, but also the social context may be seen when we simulate four different groups of individuals (Table 3). When the group consists of all introverts, or of all extraverts, everyone shares equally in the amount of time spent talking. But when the groups differ in the range of introversion-extraversion within the group, the extraverts will tend to dominate the conversation. Data supporting this prediction were reported by [Antill \(1974\)](#) who examined the interactive effect of group size and introversion/extraversion upon talking behavior. The effect of group composition on the frequency distribution of extraverted behaviors also is compatible with Fleeson’s analysis of the relationships between state and trait measures of extraversion ([Fleeson, 2004, 2007a](#)).

4. Group differences as the consequence of individual choices

Dynamic models at a longer span reflect changes in interests and goals to reflect past histories of reinforcement. Over the long run, the connection strengths between cues and action tendencies **S**, and between action tendencies and actions **E** will change to reflect experience. The **cta** model is one of motivation and choice; it involves choice between incompatible outcomes. Students who find a topic challenging enough to be interesting, and who have the required mix of temperament and ability to do well, will become progressively more interested in the topic. Others, who do not have the temperamental or ability needed for that topic will find other topics more reinforcing. Over time, this will lead to group differences in the mean levels of temperament and ability traits in different college majors. Over a longer time period, people gravitate to certain college majors, occupations, or ways of behaving as a consequence of their histories of reinforcement. But these choices are themselves mutually incompatible. For time is a finite resource and time spent in the lab doing chemistry is time not spent socializing. Time spent in doing volunteer activities is time not spent studying business admin-

Table 3: Hypothetical amount of time spent talking and the hypothetical intensity of the talking behavior in four different groups of four individuals. The first group is composed of four introverted individuals who share equally in the conversation, but engage with low average levels of action. The second group, composed of four extraverts also share equally in the conversation, but talk with much more intensity. The third group, a mix of two introverts and two extraverts shows how the amount of time spent talking decreases for the introverts as the extraverts take 50% more than their share. Although the introverts talk less, they still talk with the same intensity as in the first group. Similarly, the talkative extraverts act with the same intensity as they did in the second group. The final case is when people cover the whole range of introversion/extraversion. Simulation done using the `cta` function in *psych* with cue values as specified and running over 10,000 “time units”.

Talking behavior					
Subject	Cue Strength	Time Spent	Frequency	Av. Tendencies	Av. Actions
Four introverts					
I1	0.95	0.24	16	6	80
I2	1.00	0.25	16	5	80
I3	1.05	0.24	16	5	83
I4	1.10	0.27	16	6	79
Four extraverts					
E1	3.95	0.25	16	21	322
E2	4.00	0.24	15	26	335
E3	4.05	0.25	16	20	313
E4	4.10	0.26	15	23	297
Two introverts, two extraverts					
I1	0.95	0.11	8	14	167
I2	1.00	0.13	9	14	150
E1	4.05	0.37	22	15	215
E2	4.10	0.38	21	15	210
Full range of Introversion-Extraversion					
IE1	1.00	0.17	11	9	123
IE2	2.00	0.21	14	12	182
IE3	3.00	0.28	18	14	208
IE4	4.00	0.34	19	16	230

istration. Such patterns of histories of different choices will lead to trait constellations that reflect these choices.

In a large scale, web based assessment of temperament and ability characteristics associated with different occupations and college majors, we have shown (Revelle and Condon, 2012) striking differences in the level of cognitive ability (as assessed by the ICAR measure of ability Condon and Revelle (2014)) and the structure of the Big Five temperament measures as a function of college major. Rather than the conventional between individual structure showing independence of the dimensions of temperament and the measure of ability, when aggregated at the level of the college major, ability was highly negatively correlated with Extraversion and Agreeableness.

5. Conclusion

We started this paper with the simple premise that people differ. They differ within themselves over time, they differ between individuals cross sectionally, and they form into groups over time that differ in their structure. We have tried to show that “how” and “why” people differ may be considered in terms of the same basic dynamic model that considers motives and behaviors to have inertial properties and that can be modeled dynamically. These dynamics are not ergodic, in that the average outcome does not reflect the basic processes at the individual, nor is the structure of group differences just the average of the structure of the individuals. We believe that personality needs to be conceived at multiple temporal durations. At the individual level, the short term dynamics over seconds to days reflect the personal signature of an individual. Over longer periods of days to months, we see the typical structure of individual differences. However, when the patterns of individual choices are accumulated over the long term, over a period of year, the structure between groups is different yet again.

The study of personality needs to be considered at multiple levels of analysis: within and between individuals, and between groups of individuals. It also needs to be considered at different temporal frequencies, from the high frequencies within individuals to the long term tides of aggregated behavior. We hope that we have shown that it is time for theorists of personality and individual differences to realize the power of formal models implemented in open source software.

- Ackerman, P. L. (1997). Personality, self-concept, interests, and intelligence: Which construct doesn't fit? *Journal of Personality*, 65(2):171–204.
- Ackerman, P. L. and Heggestad, E. D. (1997). Intelligence, personality, and interests: Evidence for overlapping traits. *Psychological Bulletin*, 121(2):219–245.
- Antill, J. K. (1974). The validity and predictive power of introversion-extraversion for quantitative aspects of conversational patterns. *Dissertation Abstracts International*, 35(1-B):pp.
- Armistead, T. W. (2014). Resurrecting the third variable: A critique of Pearl's causal analysis of Simpson's paradox. *The American Statistician*, 68(1):1–7.
- Armstrong, P. I., Allison, W., and Rounds, J. (2008). Development and initial validation of brief public domain riasec marker scales. *Journal of Vocational Behavior*, 73(2):287 – 299.
- Armstrong, P. I., Smith, T. J., Donnay, D. A., and Rounds, J. (2004). The Strong ring: A basic interest model of occupational structure. *Journal of Counseling Psychology*, 51(3):299–313.
- Ashton, M. C., Lee, K., and Goldberg, L. R. (2007). The IPIP-HEXACO scales: An alternative, public-domain measure of the personality constructs in the HEXACO model. *Personality and Individual Differences*, 42(8):1515–1526.
- Atkinson, J. W. (1957). Motivational determinants of risk-taking behavior. *Psychological Review*, 64:359–372.
- Atkinson, J. W. and Birch, D. (1970). *The dynamics of action*. John Wiley, New York, N.Y.
- Atkinson, J. W. and Cartwright, D. (1964). Some neglected variables in contemporary conceptions of decision and performance. *Psychological Reports*, 14:575–590.
- Atkinson, J. W. and Raynor, J. O., editors (1974). *Motivation and Achievement*. Winston (Halsted Press/Wiley), New York.
- Bates, D., Maechler, M., Bolker, B., and Walker, S. (2014). *lme4: Linear mixed-effects models using Eigen and S4*. R package version 1.1-5.
- Blankenship, V. (1987). A computer-based measure of resultant achievement motivation. *Journal of Personality and Social Psychology*, 53:361–372.
- Bolles, R. (1980). Some functionalistic thoughts about regulation. In Toates, F. M. and Halliday, T., editors, *Analysis of motivational processes*, pages 77–102. Academic Press.
- Carroll, J. B. (1993). *Human cognitive abilities: A survey of factor-analytic studies*. Cambridge University Press, New York, NY, US.
- Carver, C. S. (1979). A cybernetic model of self-attention processes. *Journal of Personality and Social Psychology*, 37(8):1251–1281.
- Carver, C. S. and Scheier, M. F. (1982). Control theory: A useful conceptual framework for personality-social, clinical, and health psychology. *Psychological Bulletin*, 92(1):111–135.
- Carver, C. S. and White, T. L. (1994). Behavioral inhibition, behavioral activation, and affective responses to impending reward and punishment: The BIS/BAS scales. *Journal of Personality and Social Psychology*, 67:319–333.
- Cattell, R. B. (1943). The description of personality. I. Foundations of trait measurement. *Psychological Review*, 50(6):559–594.
- Cattell, R. B. (1946). *Description and measurement of personality*. World Book Company, Oxford, England.
- Condon, D. M. and Revelle, W. (2014). The International Cognitive Ability Resource: Development and initial validation of a public-domain measure. *Intelligence*, 43:52–64.
- Corr, P. J., editor (2008a). *The Reinforcement sensitivity theory of personality*. Cambridge University Press, Cambridge.
- Corr, P. J. (2008b). Reinforcement Sensitivity Theory (RST). In Corr, P. J., editor, *The Reinforcement Sensitivity Theory of Personality*, pages 1–43. Cambridge University Press, Cambridge.
- Corr, P. J., DeYoung, C. G., and McNaughton, N. (2013). Motivation and personality: A neuropsychological perspective. *Social and*

- Personality Psychology Compass*, 7(3):158–175.
- Costa, P. T. and McCrae, R. R. (1992a). Four ways five factors are basic. *Personality and Individual Differences*, 13(6):653–665.
- Costa, P. T. and McCrae, R. R. (1992b). *NEO PI-R professional manual*. Psychological Assessment Resources, Inc, Odessa, FL.
- Deary, I. (2008). Why do intelligent people live longer? *Nature*, 456(7219):175–176.
- Deary, I. J., Pattie, A., and Starr, J. M. (2013). The stability of intelligence from age 11 to age 90 years: The Lothian Birth Cohort of 1921. *Psychological Science*, 24(12):2361–2368.
- Deary, I. J., Whiteman, M., Starr, J., Whalley, L., and Fox, H. (2004). The impact of childhood intelligence on later life: Following up the Scottish mental surveys of 1932 and 1947. *Journal of Personality and Social Psychology*, 86:130–147.
- DeYoung, C. G. (2010). Toward a theory of the big five. *Psychological Inquiry: An International Journal for the Advancement of Psychological Theory*, 21(1):26 – 33.
- DeYoung, C. G., Hirsh, J. B., Shane, M. S., Papademetris, X., Rajeevan, N., and Gray, J. R. (2010). Testing predictions from personality neuroscience: Brain structure and the big five. *Psychological Science*, 21:820–828.
- DeYoung, C. G., Quilty, L. C., and Peterson, J. B. (2007). Between facets and domains: 10 aspects of the Big Five. *Journal of Personality and Social Psychology*, 93(5):880–896.
- Digman, J. M. (1990). Personality structure: Emergence of the five-factor model. *Annual Review of Psychology*, 41:417–440.
- Digman, J. M. (1997). Higher-order factors of the big five. *Journal of Personality and Social Psychology*, 73:1246–1256.
- Eysenck, H. J. (1981). General features of the model. In Eysenck, H. J., editor, *A Model for Personality*. Springer-Verlag, Berlin.
- Eysenck, H. J. (1990). Biological dimensions of personality. In Pervin, L. A., editor, *Handbook of personality: Theory and research*, pages 244–276. Guilford Press, New York, NY.
- Eysenck, H. J. and Himmelfeit, H. T. (1947). *Dimensions of personality; a record of research carried out in collaboration with H.T. Himmelfeit [and others]*. Routledge & Kegan Paul, London.
- Feather, N. T. (1961). The relationship of persistence at a task to expectation of success and achievement related motives. *Journal of Abnormal and Social Psychology*, 63:552–561.
- Ferriman, K., Lubinski, D., and Benbow, C. (2009). Work preferences, life values, and personal views of top math/science graduate students and the profoundly gifted: Developmental changes and gender differences during emerging adulthood and parenthood. *Journal of Personality and Social Psychology*, 97(3):517–532.
- Fleeson, W. (2004). Moving personality beyond the person-situation debate: The challenge and the opportunity of within-person variability. *Current Directions in Psychological Science*, 13(2):83–87.
- Fleeson, W. (2007a). Studying personality processes: Explaining change in between-persons longitudinal and within-person multi-level models. In Robins, R. W., Fraley, R. C., and Krueger, R. F., editors, *Handbook of research methods in personality psychology*, pages 523–542. Guilford Press, New York, NY.
- Fleeson, W. (2007b). Using experience sampling and multilevel modeling to study person-situation interactionist approaches to positive psychology. In *Oxford handbook of methods in positive psychology*, pages 501–514. Oxford University Press, New York, NY.
- Fleeson, W., Malanos, A. B., and Achille, N. M. (2002). An intraindividual process approach to the relationship between extraversion and positive affect: Is acting extraverted as “good” as being extraverted? *Journal of Personality and Social Psychology*, 83(6):1409–1422.
- Frijda, N. H. (2011). How emotions work. In Eysenck, M. W., Fajkowska, M., and Maruszewski, T., editors, *Personality, cognition and emotion. Warsaw Lectures in Personality and Social Psychology*, volume 2. Eliot Werner Publications, New York, N.Y.
- Fua, K., Revelle, W., and Ortony, A. (2010). Modeling personality and individual differences: the approach-avoid-conflict triad. In *CogSci 2010: The Annual meeting of the Cognitive Science Society*, Portland, Or.
- Goldberg, L. R. (1990). An alternative “description of personality”: The big-five factor structure. *Journal of Personality and Social Psychology*, 59(6):1216–1229.
- Gottfredson, L. S. (1997). Why g matters: The complexity of everyday life. *Intelligence*, 24(1):79 – 132.
- Gray, J. A. and McNaughton, N. (2000). *The Neuropsychology of anxiety: An enquiry into the functions of the septo-hippocampal system*. Oxford University Press, Oxford, 2nd edition.
- Green, A. S., Rafaeli, E., Bolger, N., Shrout, P. E., and Reis, H. T. (2006). Paper or plastic? Data equivalence in paper and electronic diaries. *Psychological Methods*, 11(1):87–105.
- Halliday, T. R. (1980). Motivational systems and interactions between activities. In Toates, F. M. and Halliday, T. R., editors, *Analysis of motivational processes*, pages 205–220. Academic Press, London.
- Halliday, T. R. and Houston, A. I. (1991). How long will newts wait? an experiment to test an assumption of a causal model of the courtship of the male smooth newt, *triturus v. vulgaris*. *Behaviour*, 116(3/4):278–291.
- Hilgard, E. R. (1980). The trilogy of mind: Cognition, affection, and conation. *Journal of the History of the Behavioral Sciences*, 16:107–117.
- Hogan, R. (1982). A socioanalytic theory of personality. *Nebraska Symposium on Motivation 1982*, 55-89.
- Hogan, R. and Kaiser, R. B. (2005). What we know about leadership. *Review of General Psychology*, 9(2):169 – 180.
- Holland, J. L. (1959). A theory of vocational choice. *Journal of Counseling Psychology*, 6(1):35 – 45.
- Holland, J. L. (1996). Exploring careers with a typology: What we have learned and some new directions. *American Psychologist*, 51(4):397 – 406.
- Horn, J. L. and Cattell, R. B. (1966). Refinement and test of the theory of fluid and crystallized general intelligences. *Journal of Educational Psychology*, 57(5):253 – 270.
- Johnson, W. and Bouchard, T. J. (2005). The structure of human intelligence: It is verbal, perceptual, and image rotation (vpr), not fluid and crystallized. *Intelligence*, 33(4):393 – 416.
- Kelly, E. L. and Fiske, D. W. (1950). The prediction of success in the VA training program in clinical psychology. *American Psychologist*, 5(8):395 – 406.
- Kievit, R. A., Frankenhuis, W. E., Waldorp, L. J., and Borsboom, D. (2013). Simpson’s paradox in psychological science: a practical guide. *Front Psychol*, 4:513.
- Kuhl, J. and Blankenship, V. (1979). The dynamic theory of achievement motivation: From episodic to dynamic thinking. *Psychological Review*, 85:239–248.
- Laran, J. and Janiszewski, C. (2009). Behavioral consistency and inconsistency in the resolution of goal conflict. *Journal of Consumer Research*, 35(6):pp. 967–984.
- Lewin, K., Adams, D. K., and Zener, K. E. (1935). *A dynamic theory of personality*. McGraw-Hill, New York and London.
- Liberman, N., Molden, D. C., Idson, L. C., and Higgins, E. T. (2001). Promotion and prevention focus on alternative hypotheses: Implications for attributional functions. *Journal of Personality and Social Psychology*, 80(1):5–18.
- Locke, E. A. (1968). Toward a theory of task motivation and incentives. *Organizational Behavior and Human Performance*, 3:157–189.
- Lubinski, D. and Benbow, C. P. (2000). States of excellence. *American Psychologist*, 55(1):137 – 150.
- Lubinski, D., Webb, R., Morelock, M., and Benbow, C. (2001). Top 1 in 10,000: A 10-year follow-up of the profoundly gifted. *Journal*

- of *Applied Psychology*, 86(4):718–729.
- McCrae, R. R. and Costa, Paul T., J. (1997). Personality trait structure as a human universal. *American Psychologist*, 52(5):509–516.
- McDougall, W. (1923). *An outline of psychology*. Methuen and Co. Limited, London.
- McGrew, K. (2009). CHC theory and the human cognitive abilities project: Standing on the shoulders of the giants of psychometric intelligence research. *Intelligence*, 37(1):1–10.
- Molden, D. and Higgins, E. (2005). Motivated thinking. *The Cambridge Handbook of Thinking and Reasoning*, pages 295–317.
- Molenaar, P. C. (2004). A manifesto on psychology as idiographic science: Bringing the person back into scientific psychology, this time forever. *Measurement*, 2(4):201–218.
- Ortony, A., Norman, D. A., and Revelle, W. (2005). Affect and proto-affect in effective functioning. In Fellous, J. and Arbib, M., editors, *Who Needs Emotions? The Brain Meets the Machine.*, pages 173–202. Oxford University Press, New York.
- Pearl, J. (2014). Comment: Understanding Simpson's paradox. *The American Statistician*, 68(1):8–13.
- Pedhazur, E. (1997). *Multiple regression in behavioral research: explanation and prediction*. Harcourt Brace College Publishers.
- Peterson, C. and Seligman, M. E. P. (2004). *Character strengths and virtues: A handbook and classification*. Oxford University Press, Oxford.
- Pinheiro, J. C. and Bates, D. M. (2000). *Mixed-effects models in S and S-PLUS*. Statistics and computing. Springer, New York.
- Prediger, D. J. and Vansickle, T. R. (1992). Locating occupations on Holland's hexagon: Beyond RIASEC. *Journal of Vocational Behavior*, 40(2):111 – 128.
- R Core Team (2014). *R: A Language and Environment for Statistical Computing*. R Foundation for Statistical Computing, Vienna, Austria. ISBN 3-900051-07-0.
- Rafaeli, E. and Revelle, W. (2006). A premature consensus: Are happiness and sadness truly opposite affects? *Motivation and Emotion*, 30(1):1–12.
- Rafaeli, E., Rogers, G. M., and Revelle, W. (2007). Affective synchrony: Individual differences in mixed emotions. *Personality and Social Psychology Bulletin*, 33(7):915–932.
- Read, S. J., Monroe, B. M., Brownstein, A. L., Yang, Y., Chopra, G., and Miller, L. C. (2010). A neural network model of the structure and dynamics of human personality. *Psychological Review*, 117(1):61 – 92.
- Revelle, W. (1986). Motivation and efficiency of cognitive performance. In Brown, D. R. and Veroff, J., editors, *Frontiers of Motivational Psychology: Essays in honor of J. W. Atkinson*, chapter 7, pages 105–131. Springer, New York.
- Revelle, W. (2008). The contribution of reinforcement sensitivity theory to personality theory. In Corr, P. J., editor, *The Reinforcement Sensitivity Theory of Personality*, chapter 18, pages 508–527. Cambridge University Press, Cambridge.
- Revelle, W. (2009). Personality structure and measurement: the contributions of Raymond Cattell. *British Journal of Psychology*, 100:253–257.
- Revelle, W. (2012). Integrating personality, cognition and emotion: Putting the dots together? In Eysenck, M. W., Fajkowska, M., and Maruszewski, T., editors, *Personality, cognition and emotion. Warsaw Lectures in Personality and Social Psychology*, chapter 9, pages 157–177. Eliot Werner Publications, New York.
- Revelle, W. (2014). *psych: Procedures for Personality and Psychological Research*. Northwestern University, Evanston, <http://cran.r-project.org/web/packages/psych/>. R package version 1.4.5.
- Revelle, W. and Condon, D. M. (2012). Multilevel analysis of personality: Personality of college majors. Presented at the annual meeting of the Society of Multivariate Experimental Psychology.
- Revelle, W. and Michaels, E. J. (1976). Theory of achievement-motivation revisited - implications of inertial tendencies. *Psychological Review*, 83(5):394–404.
- Revelle, W., Wilt, J., and Condon, D. (2011). Individual differences and differential psychology: A brief history and prospect. In Chamorro-Premuzic, T., Furnham, A., and von Stumm, S., editors, *Handbook of Individual Differences*, chapter 1, pages 3–38. Wiley-Blackwell, Oxford.
- Robinson, W. S. (1950). Ecological correlations and the behavior of individuals. *American Sociological Review*, 15(3):351–357.
- Saucier, G. (2009). What are the most important dimensions of personality? Evidence from studies of descriptors in diverse languages. *Social and Personality Psychology Compass*, 3(4):620–637.
- Scherer, K. (1995). Plato's legacy: Relationships between cognition, emotion, and motivation. *Geneva Studies in Emotion and Communication*, 9(1):1–7.
- Schimmack, U. and Reisenzein, R. (2002). Experiencing activation: Energetic arousal and tense arousal are not mixtures of valence and activation. *Emotion*, 2(4):412–417.
- Simpson, E. H. (1951). The interpretation of interaction in contingency tables. *Journal of the Royal Statistical Society. Series B (Methodological)*, 13(2):238–241.
- Smillie, L. D. (2008). What is reinforcement sensitivity theory. *European Journal of Personality*, 22(5):359–384.
- Smillie, L. D. (2014). What is reinforcement sensitivity? Neuroscience paradigms for approach-avoidance processes in personality. *European Journal of Personality*.
- Smillie, L. D., Cooper, A., Wilt, J., and Revelle, W. (2012). Do extraverts get more bang for the buck? refining the affective-reactivity hypothesis of extraversion. *Journal of Personality and Social Psychology*, 103(2):306–326.
- Smillie, L. D., Geaney, J., Wilt, J., Cooper, A. J., and Revelle, W. (2013). Aspects of extraversion are unrelated to pleasant affective reactivity: Further examination of the affective reactivity hypothesis. *Journal of Research in Personality*, 47(5):580–587.
- Smillie, L. D., Loxton, N. J., and Avery, R. E. (2011). Reinforcement Sensitivity Theory, Research, Applications and Future. In Chamorro-Premuzic, T., Furnham, A. F., and von Stumm, S., editors, *Handbook of Individual Differences*. Wiley-Blackwell.
- Sorrentino, R. M. (1993). The warm look in control motivation and social cognition. In *Control Motivation and Social Cognition*, pages 291–322. Springer.
- Sorrentino, R. M., Smithson, M., Hodson, G., Roney, C. J., and Walker, A. M. (2003). The theory of uncertainty orientation: a mathematical reformulation. *Journal of Mathematical Psychology*, 47(2):132 – 149.
- Spearman, C. (1904). "General Intelligence," objectively determined and measured. *American Journal of Psychology*, 15(2):201–292.
- Thayer, R. E. (1989). *The biopsychology of mood and arousal*. Oxford University Press, The biopsychology of mood and arousal. xi, 234 pp. New York, NY.
- Thayer, R. E. (2000). Mood. In Kazdin, A. E., editor, *Encyclopedia of psychology*, volume 5, pages 294–295. American Psychological Association; Oxford University Press 508 pp, Washington, DC ; New York, NY.
- von Stumm, S., Chamorro-Premuzic, T., and Ackerman, P. (2011). Re-visiting intelligence–personality associations. In Chamorro-Premuzic, T., Furnham, A. F., and von Stumm, S., editors, *The Wiley-Blackwell Handbook of Individual Differences*, pages 217–241. Wiley-Blackwell.
- Watson, D. and Tellegen, A. (1985). Toward a consensual structure of mood. *Psychological Bulletin*, 98(2):219–235.
- Watson, D. and Tellegen, A. (1999). Issues in dimensional structure of affect—effects of descriptors, measurement error, and response formats: Comment on Russell and Carroll (1999). *Psychological*

- Bulletin*, 125(5):601 – 610.
- Wilt, J., Condon, D., and Revelle, W. (2011a). Telemetrics and online data collection: Collecting data at a distance. In Laursen, B., Little, T. D., and Card, N., editors, *Handbook of Developmental Research Methods*, chapter 10, pages 163–180. Guilford Press, New York.
- Wilt, J., Funkhouser, K., and Revelle, W. (2011b). The dynamic relationships of affective synchrony to perceptions of situations. *Journal of Research in Personality*, 45:309–321.
- Wilt, J. and Revelle, W. (2009). Extraversion. In Leary, M. R. and Hoyle, R. H., editors, *Handbook of Individual Differences in Social Behavior*, chapter 3, pages 27–45. Guilford Press, New York, N.Y.
- Yule, G. U. (1903). Notes on the theory of association of attributes in statistics. *Biometrika*, 2(2):121–134.
- Zeigarnik, B. (1927/1967). On finished and unfinished tasks. In Ellis, W. D., editor, *A source book of Gestalt psychology (Reprinted and translated from Psychological Forschung, 1927, 9, 1-85)*. Harcourt Brace, New York.